



MOSHI - CHAKAN ROAD
Near Volkswagen-Mercedes Benz

NEW LAUNCH



WELCOME TO



MOSHI - CHAKAN ROAD
Near Volkswagen-Mercedes Benz





Project designed by **MR. JUN-ICHI INADA**,
legendary Japanese architect.

ABOUT ARCHITECT

Mr. Jun-ichi Inada is a luminary architect from Osaka, Japan, who has won acclaim and reknown for his work with several national and international projects, including a decade-long stint with Osaka Commercial College Media Centre, Harima Central Park, Japan and an even longer association with the Kochi Prefecture Government. Zapan is the culmination of his vision, overlapping with Xrbia's ambition to bring Japanese design technology to India.

ABOUT ZAPAN

Built with the essence of Japanese design, but Indian at heart, Zapan sports a unique identity that translates into a one-of-a-kind address. It's what we call globally local.

The Sculptured Island which greets you at the drop plaza, the sit-out pergolas modelled on the Shinto architectural style, the Reflection Pool, the Zen Garden and the Holy Garden: these are just some of the imprints of Japanese culture in Zapan that enrich your lifestyle.

A STRATEGIC LOCATION

Zapan is spread over 13.8 acres in Chakan, very close to iconic industrial landmarks such as Volkswagen and Mercedes-Benz. Zapan enjoys proximity to the Mumbai-Pune Expressway and thus, easy connectivity to Talegaon, Nashik Phata and Hinjewadi as well. Chakan has been listed as one of the top potential investment destinations in India by Cushman & Wakefield. The Podar International School is located within the project, making world-class education available for your kids.





MOSHI - CHAKAN ROAD

Near Volkswagen-Mercedes Benz

JAPANESE LIFESTYLE REVOLUTION, NOW IN CHAKAN

**JAPANESE LUXURY
AT WORK**

BE AT PEACE WITH YOUR SURROUNDINGS

Zen Garden creates a miniature style landscape through carefully composed arrangement of rocks, water features, moss, pruned trees and bushes. They were intended to imitate the intimate essence of nature, not its actual appearance, and to serve as an aid to meditation about the true meaning of existence.



Gym



Zen Garden



Clubhouse



Amphitheatre



Indoor Games



Reflection Pool



**Children Play Area with
Multiunit Play Station**



**Cabana for Yoga
and Meditation**



**Outdoor Gym for
Senior Citizens**



**Serving Area with
Small Pantries**



**Sculptured Island
in drop Plaza**



**CBSE Board Podar
International School**



Plaza for Pick and Drop



Holy Garden



Party Lawn



Paved Plaza



Pergola



Sitting Benches



HOMES INSPIRED BY JAPANESE DESIGN & TECHNOLOGY



MOSHI - CHAKAN ROAD
Near Volkswagen-Mercedes Benz



QUALITY THE WORLD ASPIRES FOR

PROJECT SPECIFICATIONS

STRUCTURE

- RCC framed structure

BRICKWORK

- 5" thick AAC block brickwork

PLASTER

- Internal walls in Gypsum and double coat sand faced external plaster.

PLUMBING

- Concealed plumbing with hot and cold mixing unit and one chrome plated fitting in dry terrace. Separate plumbing line for flush tank (reuse treated water). Solar water heating in only attached bathroom.

FLOORING

- Vitrified tiles in all the rooms. Dado up to 7' height in bathrooms and lintel level kitchen. Steel gray or equivalent granite kitchen platform with stainless steel sink.

DOORS AND WINDOWS

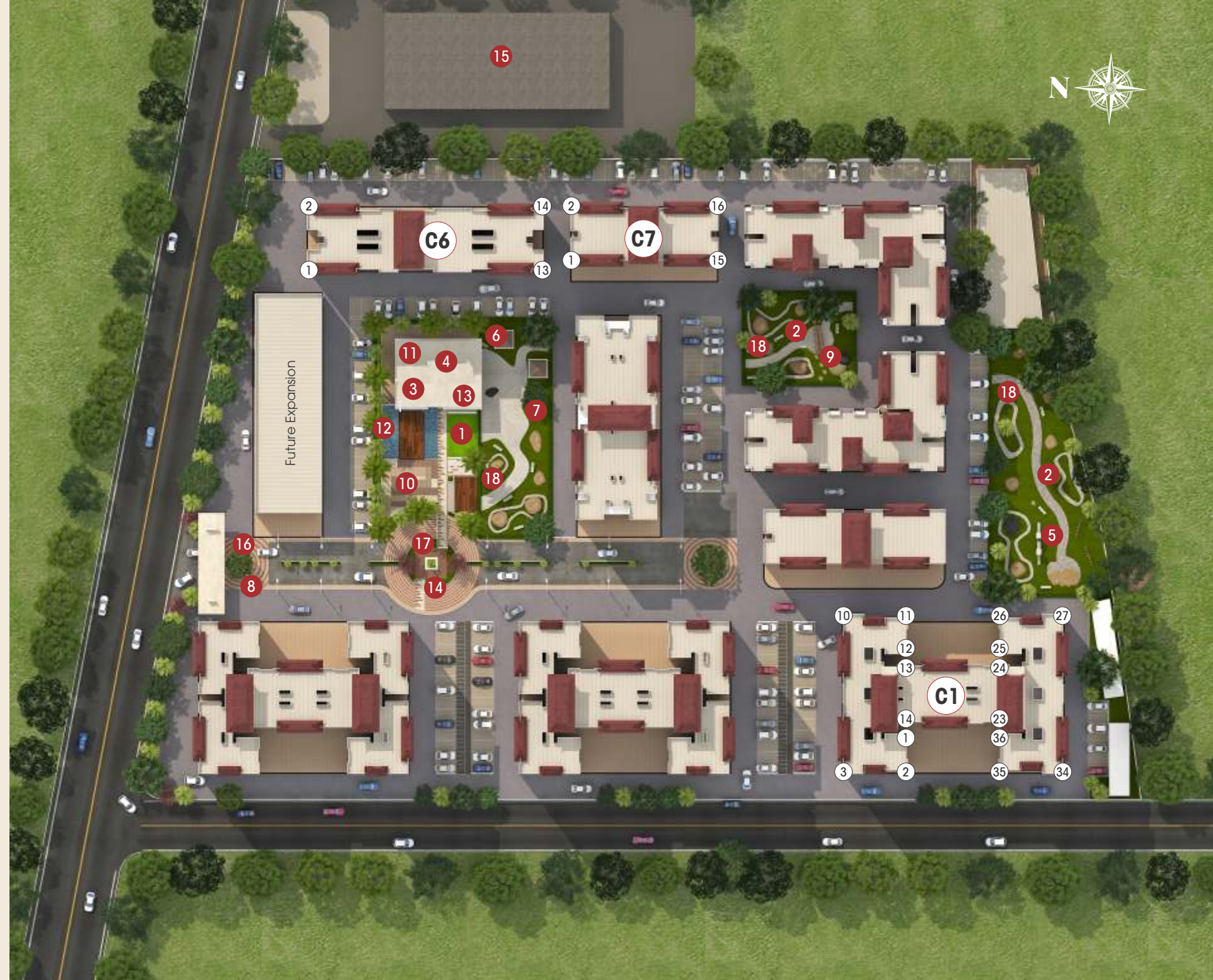
- R.C.C. door frames with oil painted flush doors in all rooms with Aldrop. Main door of plywood/wooden door frame with both side laminated door and good quality fittings (Europa Night Latch Lock or equivalent on main door). 3 track powder coated aluminum windows with mosquito net along with oil painted safety grills.

ELECTRIFICATION

- Concealed electrification with good quality switches (Great White or equivalent), Miniature Circuit Breaker, TV and telephone point in living room, provision for exhaust fan in kitchen.

PAINT

- Semi acrylic external paint and oil bound distemper for internal walls.



1. Party Lawn

2. Zen Garden

3. Gym

4. Clubhouse

5. Children Play Area with Multi-unit Play Station

6. Cabana for Yoga and Meditation

7. Outdoor Gym for Senior Citizens

8. Plaza for Pick and Drop

9. Holy Garden

10. Amphitheatre

11. Indoor Games

12. Reflection Pool

13. Serving Area with Small Pantries

14. Sculptured Island in Drop Plaza

15. CBSE Board Podar International School

16. Paved Plaza

17. Pergola

18. Sitting Benches

COME HOME TO



MOSHI - CHAKAN ROAD
Near Volkswagen-Mercedes Benz





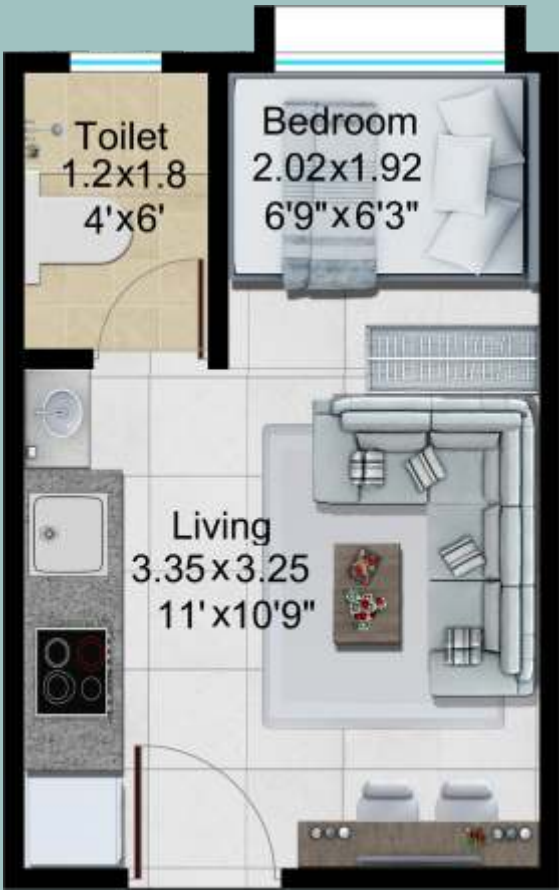
APARTMENT
DESIGN



1 BHK SAPPORO APARTMENT
CARPET AREA = 21.83 SQ.M
= 235 SQ.FT.



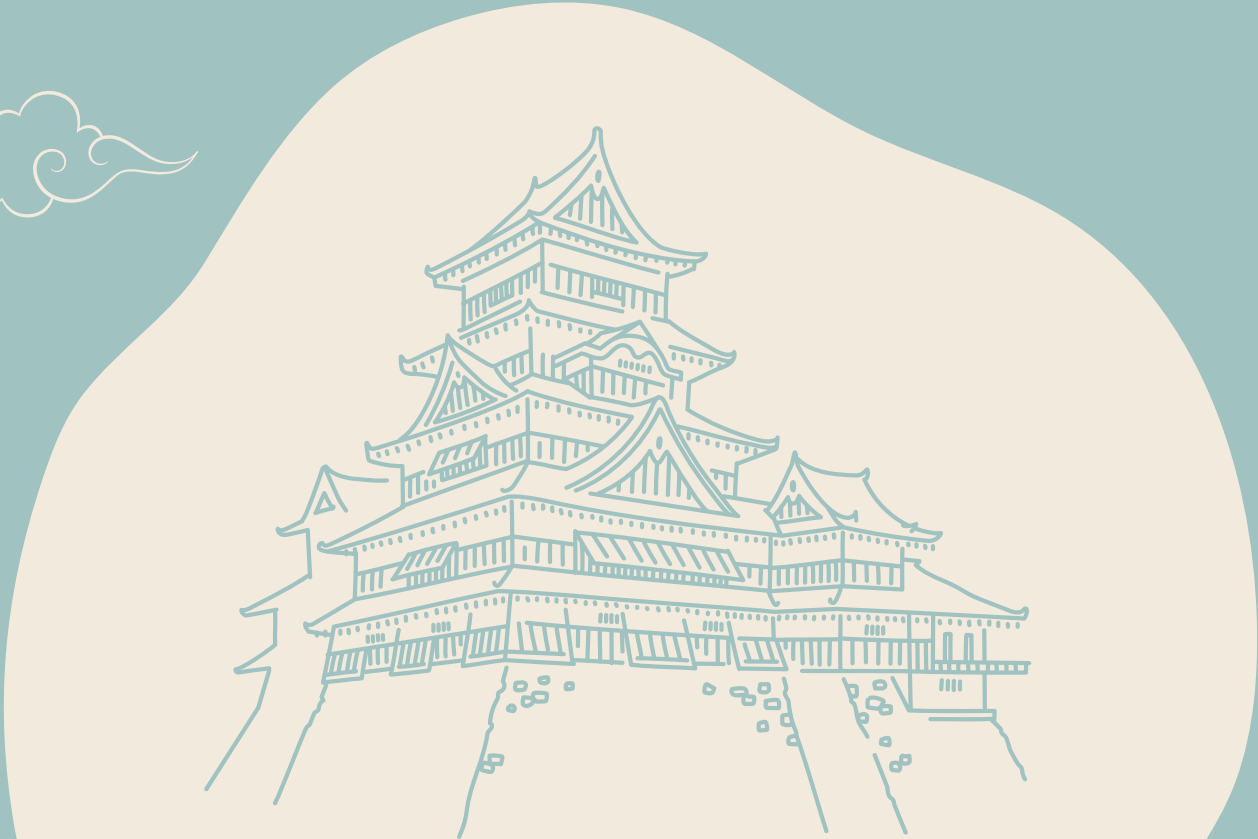
1 BHK YOKOHOMA APARTMENT
CARPET AREA = 26.94 SQ.M
= 290 SQ.FT.



1 RK TOKYO STUDIO
CARPET AREA = 17.46 SQ.M
= 188 SQ.FT.



2 BHK KYOTO APARTMENT
CARPET AREA = 38.29 SQ.M
= 412 SQ.FT.



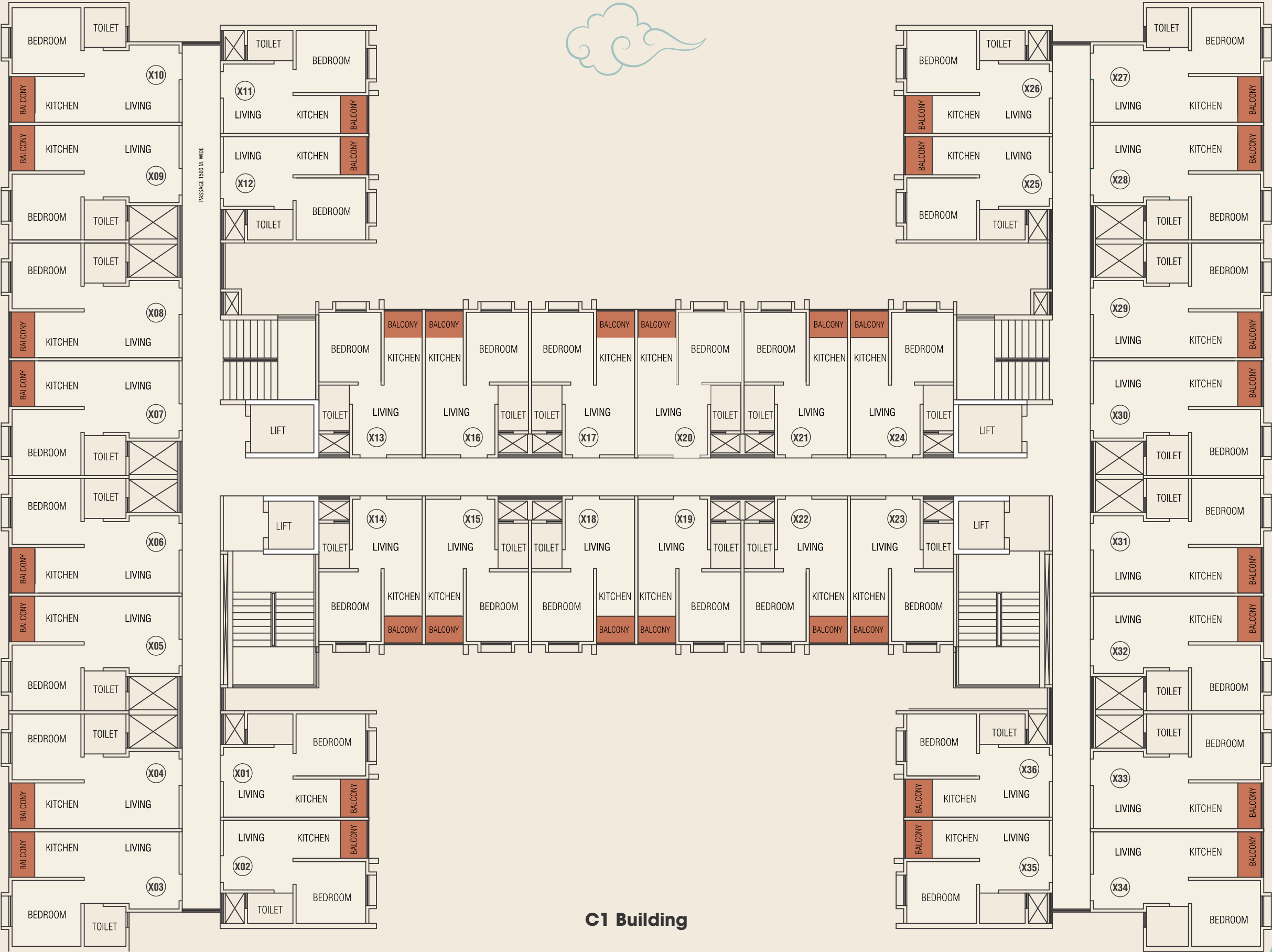
AN INSPIRED CREATION, YOUR GATEWAY TO JAPAN



MOSHI - CHAKAN ROAD
Near Volkswagen-Mercedes Benz



FLOOR PLAN





MOSHI - CHAKAN ROAD
Near Volkswagen-Mercedes Benz

JAPAN-INSPIRED LIFESTYLE NOW IN PUNE



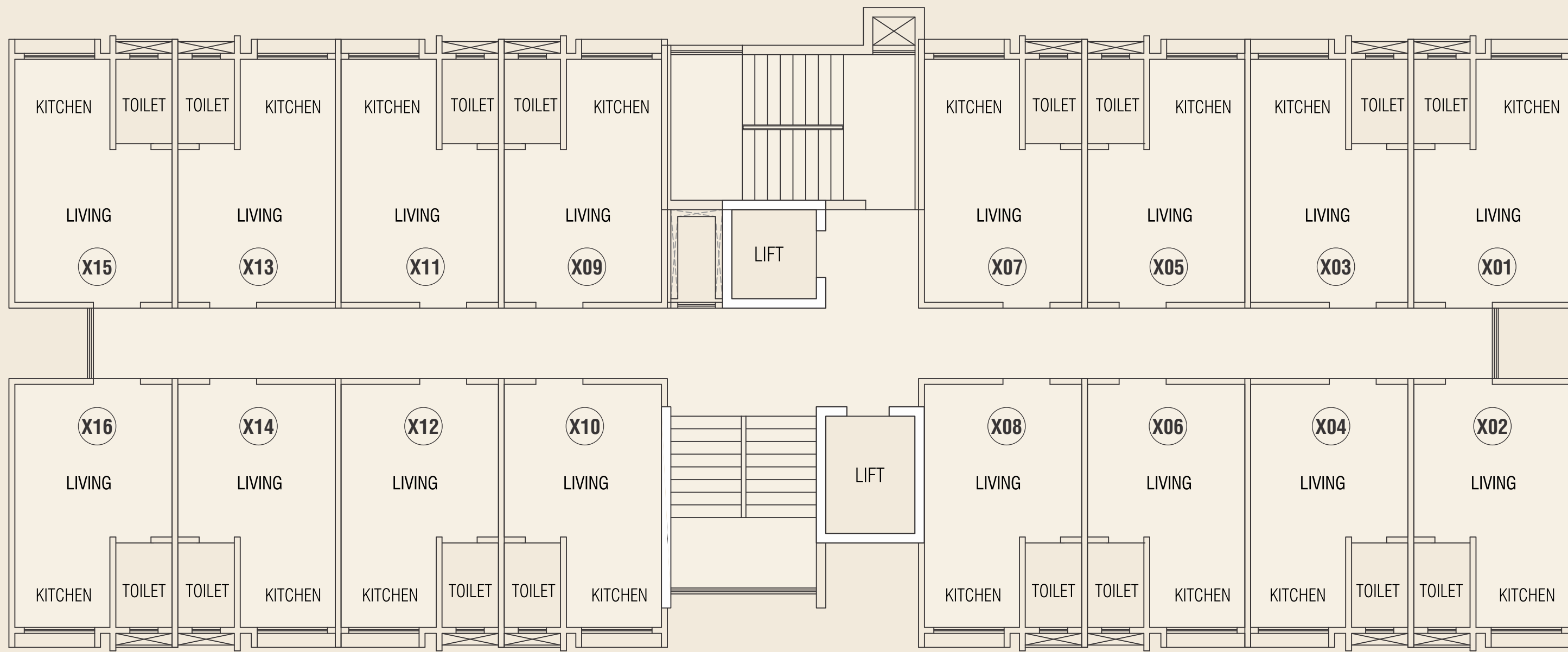
C6 Building





MOSHI - CHAKAN ROAD
Near Volkswagen-Mercedes Benz

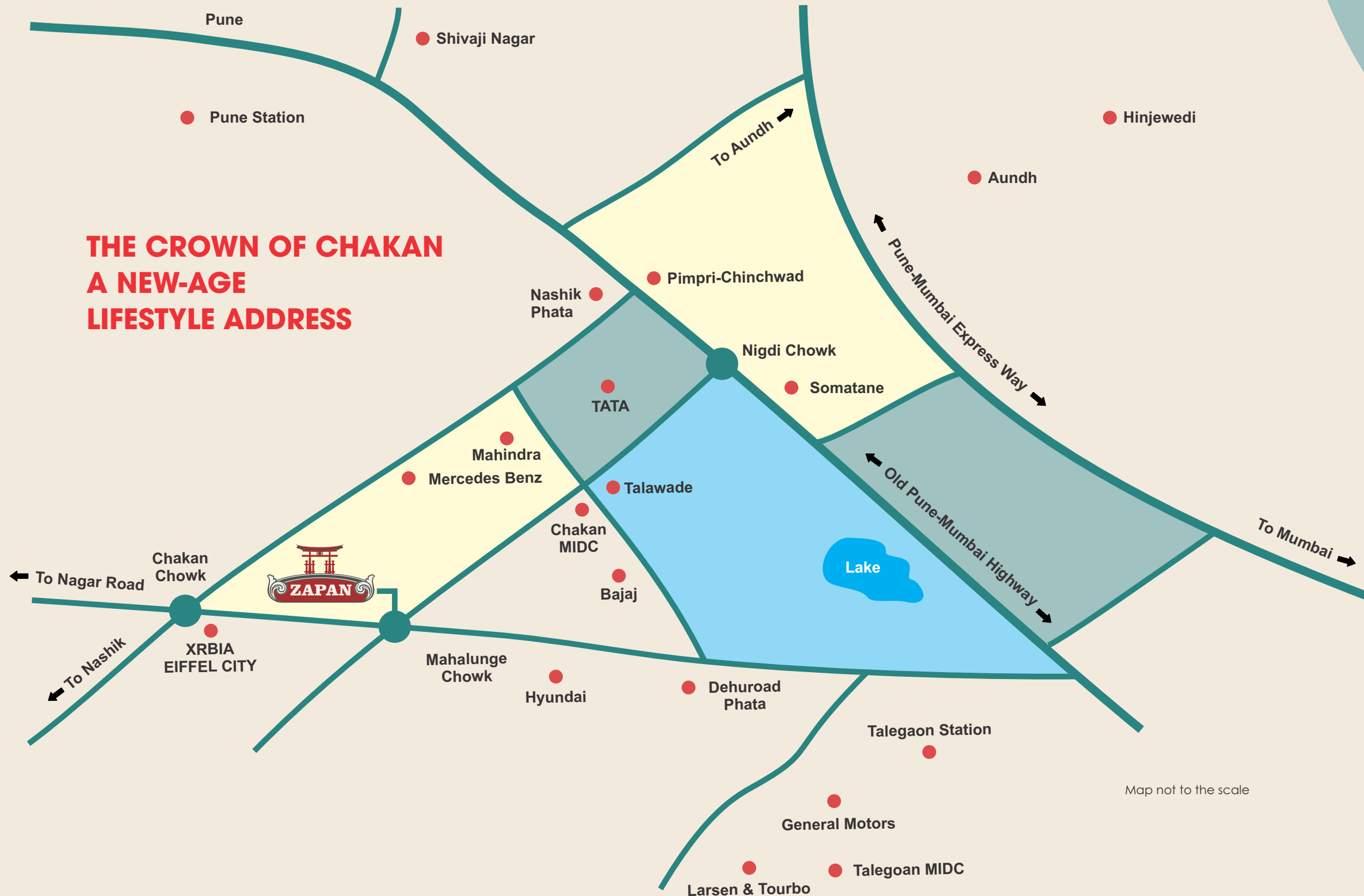
**STYLE HAI JAPANI
LEKIN DIL HAI
HINDUSTANI**



C7 Building



THE CROWN OF CHAKAN A NEW-AGE LIFESTYLE ADDRESS



KEY DISTANCES

Pimple Saudagar	: 25 min.	Talegaon	: 25 min.
Mercedes Benz	: 2 min.	Moshi	: 15 min.
Volkswagen	: 2 min.	Pune-Mumbai Expressway	: 20 min.
Bhosari MIDC	: 20 min.	Nashik Highway	: 20 min.



MahaRERA Registration No. :
P52100015654 | P52100015625 | P52100015649 | P52100015547 | P52100019508
Real Estate Agent RERA No. : A52100007403
maharera.mahaonline.gov.in

Managed by

XR BIA
TECHNOLOGY #LIVING IT #LOVING IT

Developed by

